

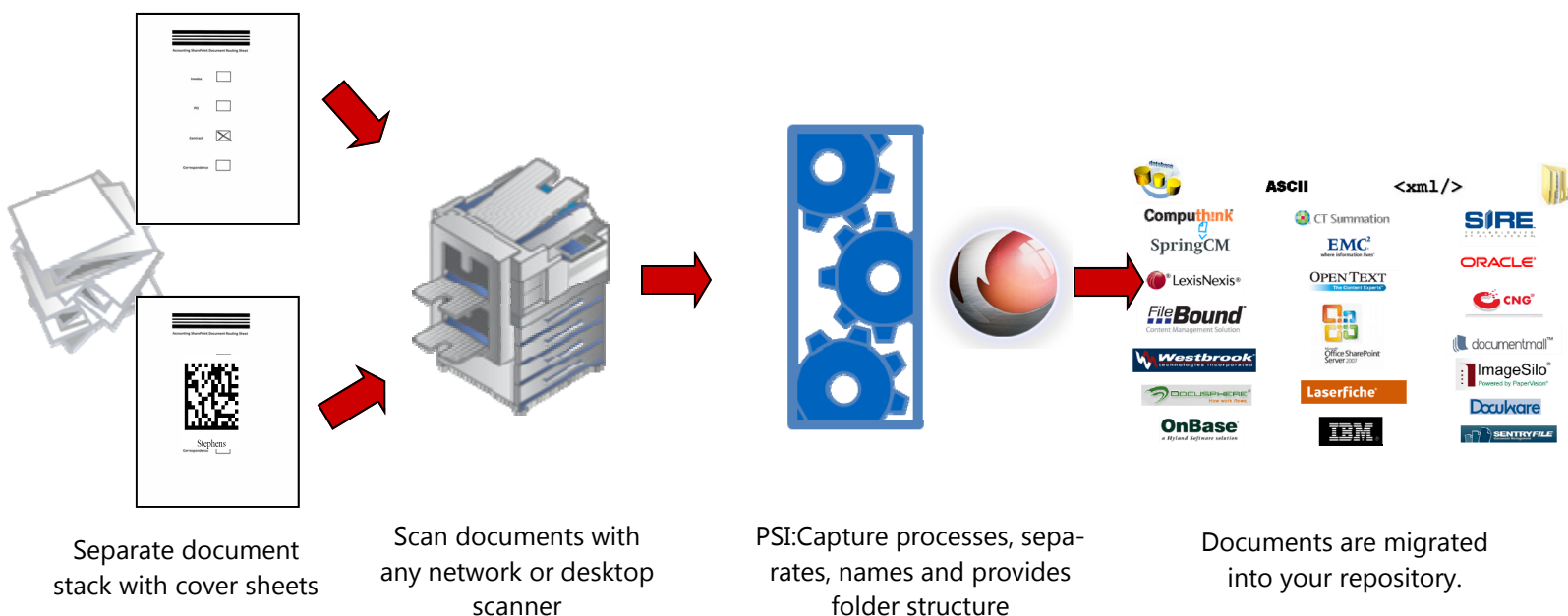
Is there a way to make scanning documents through my copier more efficient?

One answer: **PSI:Capture for MFPs**

Scanning with today's Multi-function Printers/Copiers, or MFPs, has its challenges. Although the devices are fast and produce high quality output, there are many issues when scanning with these devices:

- Basic Capabilities
- No standardization
- Documents are not searchable
- Time intensive process
- Lack of integration into Enterprise Applications

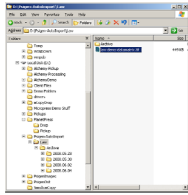
PSIGEN's PSI:Capture for MFPs enhances the capabilities of any network scanning device. This advanced capture application adds efficiency, standardization and flexibility to your current scanning process, saving time and money.



PSIGEN | Software Inc.

For More Information:

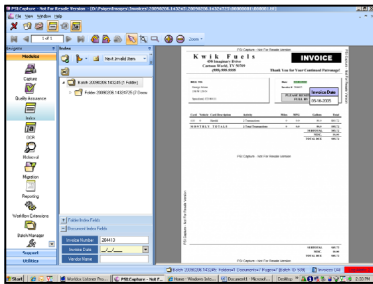
Phone • (866) 730-1700 www.ATechnologies.com | sales@ATechnologies.com



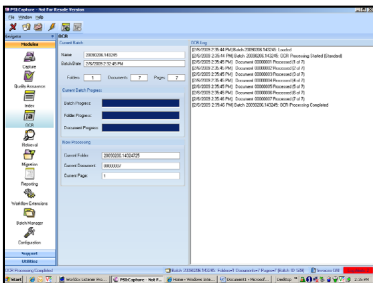
Auto-import documents from network folders. The auto-import feature allows multiple devices to scan into processing folders so you can share the capabilities throughout your organization.



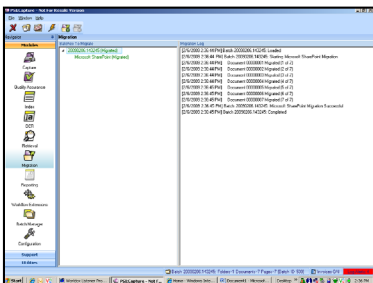
Separate documents through a variety of methods: barcodes, routing sheets, logo recognition, zone OCR, fixed pages and many others. This feature allows the scanning of multiple documents in a single stack.



Index documents through a variety of methods: manual input, point and click entry, database lookup, barcode population, zone OCR and selection lists to name a few.



OCR documents to text, PDF, and a variety of other popular formats.



Migrate documents to a vast array of document repositories, including: Microsoft SharePoint, Open Text Alchemy, Application Extender, Windows File Folders, Database, and many other industry ECM systems.



Automate and Standardize The automated process provides repeatable results with a customized folder structure and document naming conventions, in just about any Document Management or ECM system.



PSIGEN | Software Inc.

For More Information:

Phone • (866) 730-1700 www.ATechnologies.com | sales@ATechnologies.com